

OFFICE SPACE



AT ORIGIN WORKSPACE

We provide flexible office spaces tailored to your team's needs, with options to customise and expand as your business grows. As an Origin Workspace member, you and the team also benefit from premium hospitality services, community events, and wellness activities to support both work and well-being.





WELCOME TO ORIGIN WORKSPACE

At Origin Workspace, your team will have a office space crafted to the highest standards, offering a dedicated environment to focus and thrive in. Beyond your office, you and the team will enjoy all the perks of being a Origin Workspace Member, stay active in our Wellness Centre, have lunch on our stunning rooftop terrace, meet with clients in our professional meeting spaces, and unwind in our lounge area. We're committed to helping you and your team achieve a seamless work-life balance every day.

COST

Traditional office leases can be costly, especially for startups and growing businesses. Origin Workspace offers a more affordable solution with flexible membership options, allowing you to scale without long-term commitments.

We are proud to be all inclusive – one fee covers everything in your monthly invoice including business rates.



OFFICE SPACE CONTRACT |



AMENITIES

Origin Workspace offers premium amenities like bean to cup coffee, kitchen facilities and reception services, all included in the membership. Traditional offices often lack these or charge extra fees. At Origin, everything is designed to boost your productivity and success.

FLEXIBILITY

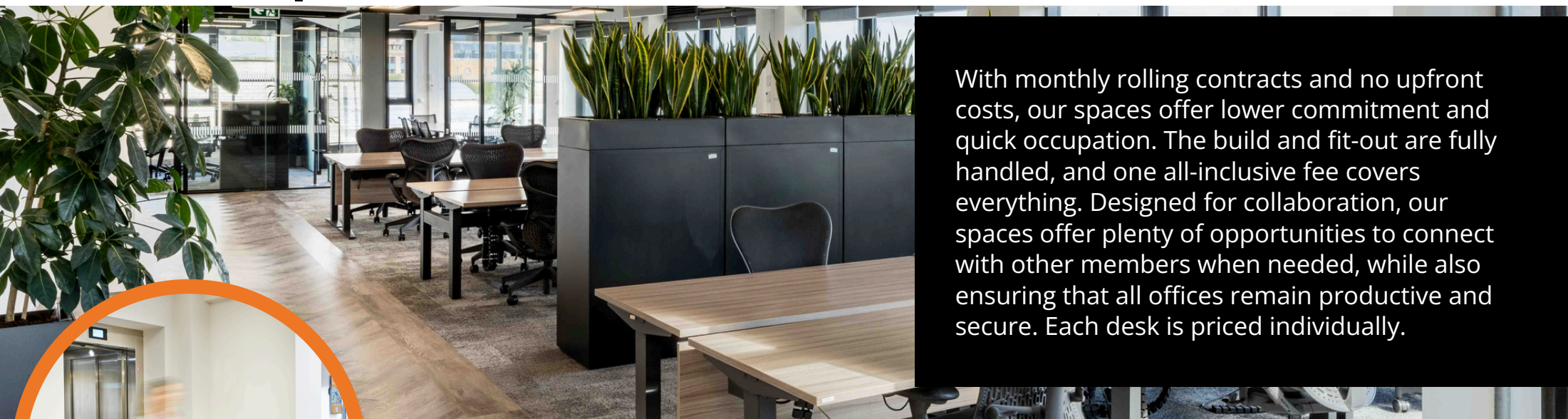
Coworking spaces like Origin Workspace offer greater flexibility than traditional offices, with 7 days a week access, customisable office layouts, and short-term leases. Unlike fixed leases and limited hours, Origin adapts to your needs without long-term commitments.

NETWORKING

At Origin Workspace, you'll find a vibrant networking environment with businesses from various sectors, fostering collaboration and connections. Unlike traditional offices, coworking spaces encourage cross-industry relationships, helping you to expand your network.



BENEFITS



With monthly rolling contracts and no upfront costs, our spaces offer lower commitment and quick occupation. The build and fit-out are fully handled, and one all-inclusive fee covers everything. Designed for collaboration, our spaces offer plenty of opportunities to connect with other members when needed, while also ensuring that all offices remain productive and secure. Each desk is priced individually.



7 DAYS A WEEK ACCESS

Our building is open 7 days a week, giving our office members access to the facilities whenever they need them. This includes access to our Wellness Centre, communal areas and offices.



ON HAND SUPPORT

Our team of hosts is dedicated to making your workday seamless. From handling post to providing IT support, we're here to ensure you and your team are comfortable, Monday to Friday. Our team are fully First Aid and fire safety trained.

GYM AND WELLNESS CLASSES

Office members enjoy full access to our on-site Wellness Centre and its classes. From 6pm workout sessions to attending physio-led Pilates, we've got you covered. We believe in that work-life balance.

BENEFITS |

ROOF TERRACE ACCESS

Our rooftop terraces offer sweeping city views, making it an ideal spot for gatherings, whether for a lunchtime meet-up or an afternoon drinks soirée with colleagues or clients. We are proud to offer access to Office members during business hours.

20% DISCOUNT ON MEETING ROOMS

Our small to large meeting rooms and presentation suite feature state-of-the-art Sharp AV technology, including touch screens and conference calling. We also provide complimentary hot drinks, biscuits and stationary with every booking. Office members receive a 20% discount on every booking. Our catering partners can accommodate all dietary needs with meals and snacks at an additional cost.

CHARITY VOLUNTEER DAYS

Origin Workspace supports 7 charities through organised volunteer days and events. We invite our members to join these efforts, providing opportunities to give back to the community.

COMMUNITY

At Origin Workspace, our community thrives through carefully curated monthly events designed to foster collaboration and build professional relationships. Each event is structured to encourage meaningful interactions, helping members connect, share ideas, and grow their networks in a supportive environment.



OFFSITE & ONSITE EVENTS

Sometimes it pays to step away from your desk and do something different. Our ever evolving events programme welcomes experienced speakers to inspire your business thinking, and networking events to encourage collaboration.

SERVICES |



PRINTING SERVICES

Printers are available on every floor, along with confidential waste bin services.



SECURE LOCKERS

Secure lockers are available in every office, office members can also use gym lockers located near our gym.



TELEPHONE BOOTHS

Need a private space for a call? Soundproof telephone booths are available throughout the building.



BREAK OUT SPACE

Take a break from the office in our communal spaces, such as the lounge and lobby, which are perfect for team lunches and quick catch-ups.

SUSTAINABILITY AT ORIGIN WORKSPACE |



SOLAR PANELS

We've installed **90** solar panels on the second phase of our building, which now contribute to powering **35%** of the energy used across our workspace, significantly reducing our reliance on non-renewable energy sources.



LIGHTING

An impressive **95%** of all the lighting throughout our space consists of energy-efficient LEDs, which help lower energy consumption while providing high-quality lighting.



SENSORS

Our lighting system operates on advanced motion control sensors, ensuring that lights automatically switch off after **20 minutes** of inactivity, further optimising energy usage throughout the workspace.



CYCLING

We actively encourage our members to cycle to work, and to support this, we provide **64 secure bike racks** within our dedicated bike storage area, promoting eco-friendly commuting options.



VENTILATION

Natural ventilation solutions are implemented in **80%** of our workspace, enhancing air quality while minimising the need for aircon.



RECYCLING

We offer a recycling service that covers batteries, stationery, and IT equipment. We also provide conveniently located recycling bins alongside general waste bins throughout the building, while food waste bins ensure that materials are composted



WATER

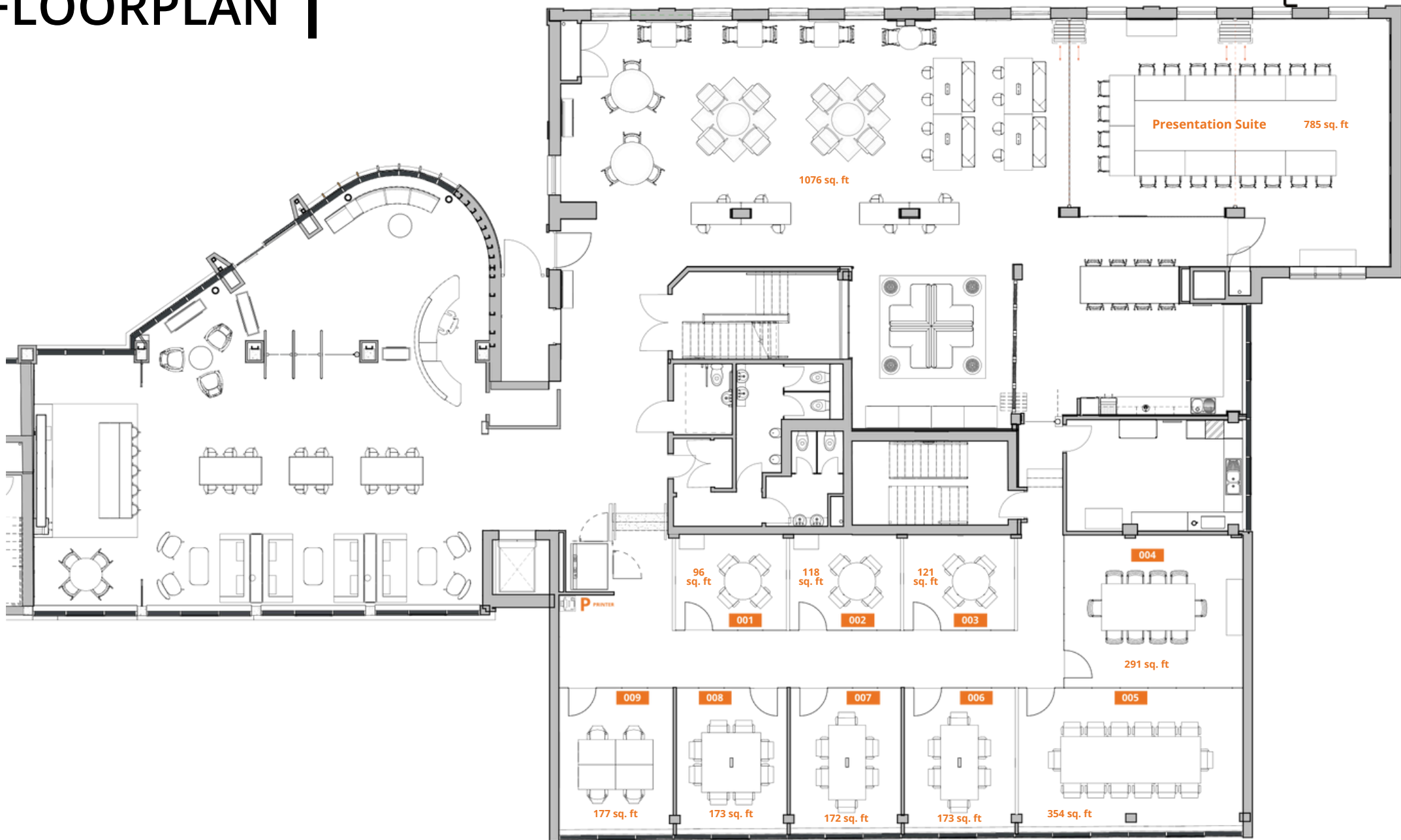
Our **10** waterless urinals, installed throughout the facility, each save an estimated **40,000 gallons** of water annually, contributing to significant water conservation efforts.



ETHICAL SOURCING

The coffee we serve comes from Clifton Coffee and TrueStart, two Bristol-based companies that prioritise ethical sourcing and sustainability, with a shared focus on reducing their carbon footprint and supporting local communities.

FLOORPLAN



FLOORPLAN



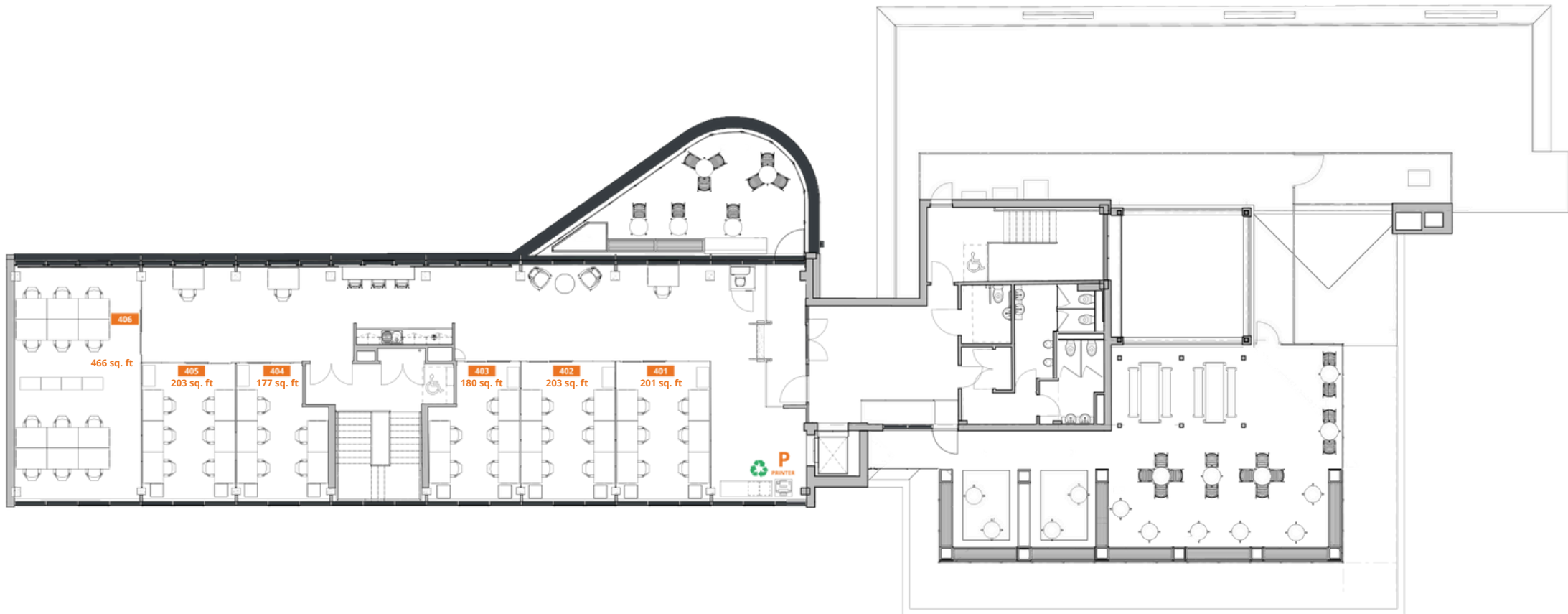
FLOORPLAN



FLOORPLAN



FLOORPLAN



CONNECT WITH US

CHECK OUT WHAT WE'RE UP TO ON
INSTAGRAM, LINKEDIN, X AND FACEBOOK!



@ORIGINWORKSPACE



**WE LOOK FORWARD TO
WELCOMING YOU TO THE SPACE.
- THE ORIGIN WORKSPACE TEAM**



WEDNESDAY RUN CLUB



MONTHLY MEMBERS LUNCH



CHARITY VOLUNTEER DAY